


Machine
WINNER
台灣威諾斯漢



World Class **VMC**
Linear Ways Series

www.winnerstech.com.tw



VMC 850/1000/1100

High Speed VMC

Achieve High Level of Accuracy & Rigidity



A/E series

- A - 3 axes linear guideways
- E - X & Y linear; Z boxways



Gear-drive spindle

The geared-head spindle performs increased high torque for heavy duty cutting. All the gear parts are contained in oil box with well-sealed system, to guarantee all parts being lubricated well and make the noise to low-level.



Direct-drive spindle

The most advanced spindle design is an innovative 10,000 ~ 12,000 rpm, in-line direct-drive spindle that is coupled directly to the motor. This provides super-smooth operation for excellent surface finishes, and reduces operating heat for greater thermal stability.



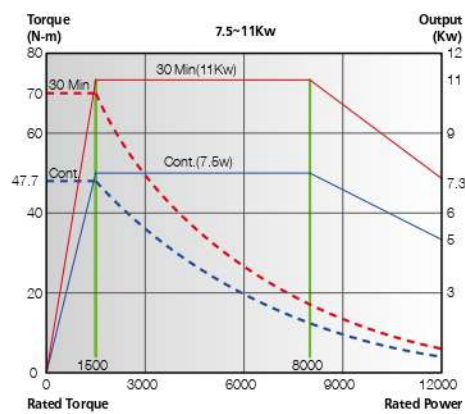
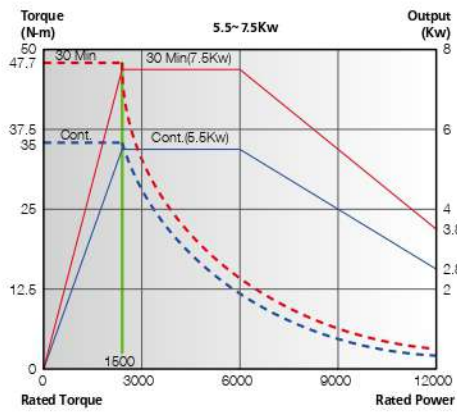
Cartridge type spindle

The spindle use pre-loaded angular-contact bearings throughout, to enhance radial stability, enabling heavy cuts in steel. The belt type spindle allows heavier cutting and create a better part finish. This spindle is prepared to easily add the CTS option.

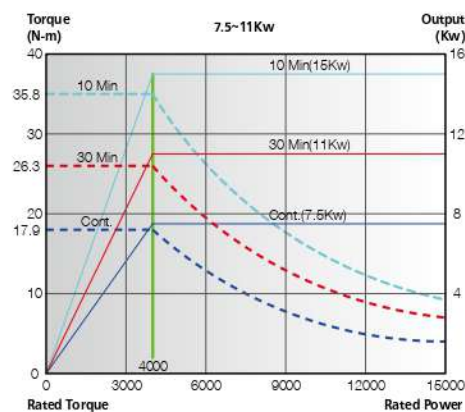
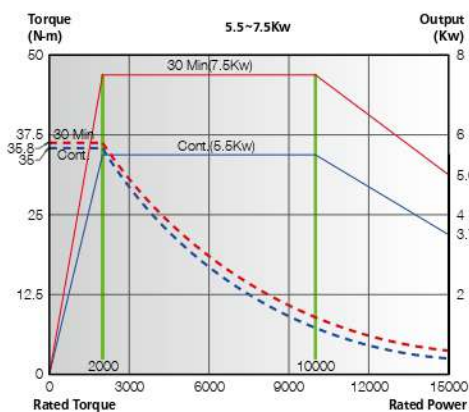
12000 / 15000rpm Spindle Speed Accomplish and Designed for High - Speed Performance.

Spindel Motor Torque (Mitsubishi)

12000RPM

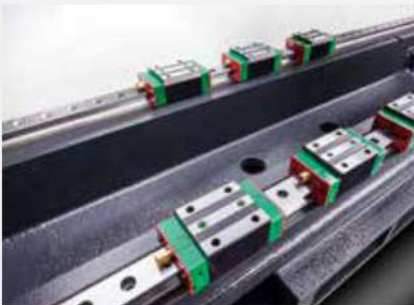


15000RPM



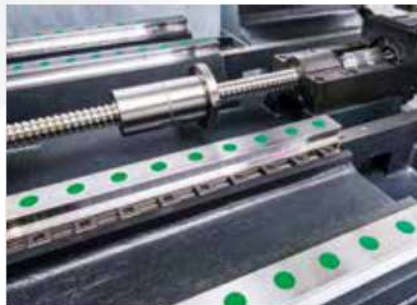
VMC 1400/1801/1901

Tough • Accurate • Versatile



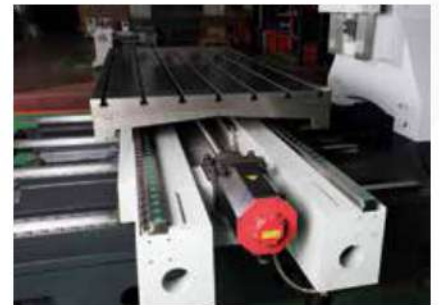
X-axis adopted with 6-blocks

6 blocks for X-axis roller linear guides to ensure support rigidity, X-axis has no hanging problem.



Enforced double-nut ball screw

Double – anchored ballscrew with ever extra broadened bearing nut than any others, enhance high cutting rigidity and accuracy while high cutting rapid feed.



Directly coupled servo motor

Superior servo motor connected directly to the ballscrews with rigid shaft couplings.

Anti-flex, Reinforced Base & Column Castings

- Wide base & box-shaped column provide the super rigidity for heavy duty cutting or for high speed cutting.
- The column is a large span design with an inverted "Y" shape construction and with cross ribs for outstanding rigidity and stability.
- Super strong castings feature anti-flex, vibration-absorbing ribs that transfer vibrations away from the cutting area.

4-linear Guideways on Y-axis

- The heavy-duty linear guideways are applied on X, Y axes and Z-axis is precision boxway type which shall be free from loads deformation.
- High speed feed-rate and repeatability accuracy are guaranteed.

Double Chip Auger

- Simple and efficient chip removal designed to adopt chip augers on both side of machine. High volume coolant washes the chips from the work area into the augers that move the chips in the disposal container.



Swivel control panel

Control panel is available for up-and-down rotation by ± 15 degrees for easy operation.



Z-axis box ways

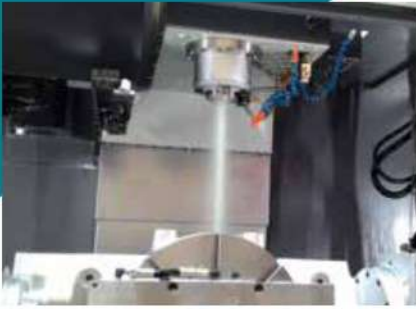
Box way design on Z axis reinforces stability while machining.



4-linear guideways on Y-axis

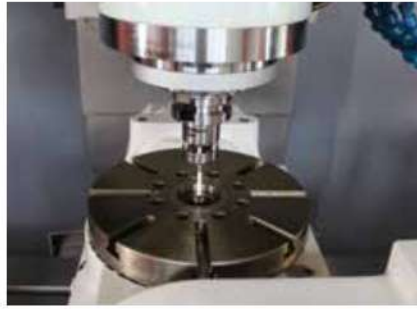
The heavy-duty linear guide way is applied on X - Y axes.

Options



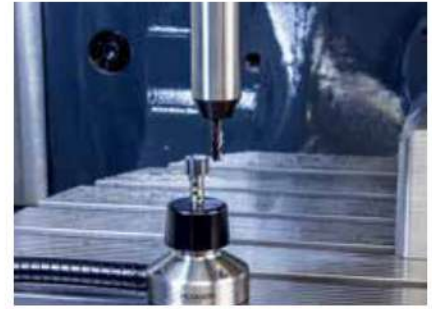
Coolant through spindle(CTS)

The optional Coolant Through Spindle (CTS) help to increase the higher cutting speed, chips removable for deep-hole drill and fine finishing of pocketing mill.



Workpiece measurement

The advance part probing system acts parts inspection and primary-piece measurement, the data quickly advanced the necessary adjustment and coordinate compensation for high quality processing.



Tool measurement

Simplified tool measurement either for tool length or tool outer diameter can be activated with initial M codes for breakage detective and also auto compensation.



4th/ 5th axis rotary table

4th / 5th axis rotary table available for multi-sides machining. The reduced set-up time brings higher productivity and absolute parts accuracy.



Linear scales

Linear scales are required when absolute positioning accuracy is necessary, in order to ensure exact axis positioning under fluctuation temperatures. Linear scales can achieve high positioning accuracy.

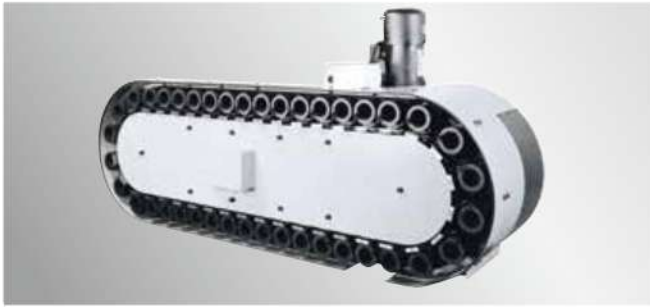


Coolants jets around spindle

While high speed machining, the equipment can help to eliminate the chips stuck inside of workpiece, hence the accuracy and tool life can be kept longer.

Connect with High-Value Manufacturing Markets





Chain type ATC-30T

The loading capacity is 30 tools.
 BT - 50 tool shank can be options.



Chain type chip conveyor

Chain type chip conveyor provides the most efficient chip removal jobs and best chip-free coolant effect to massive productions.



Coolant flushing device

The optional side-flushing device can help efficient removal of chips.



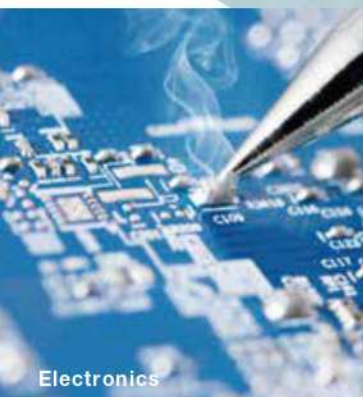
Spindle oil cooler

Spindle oil cooler can be good helps to keep normal temperature when spindle high speed & long time running.



Electrical cabinet

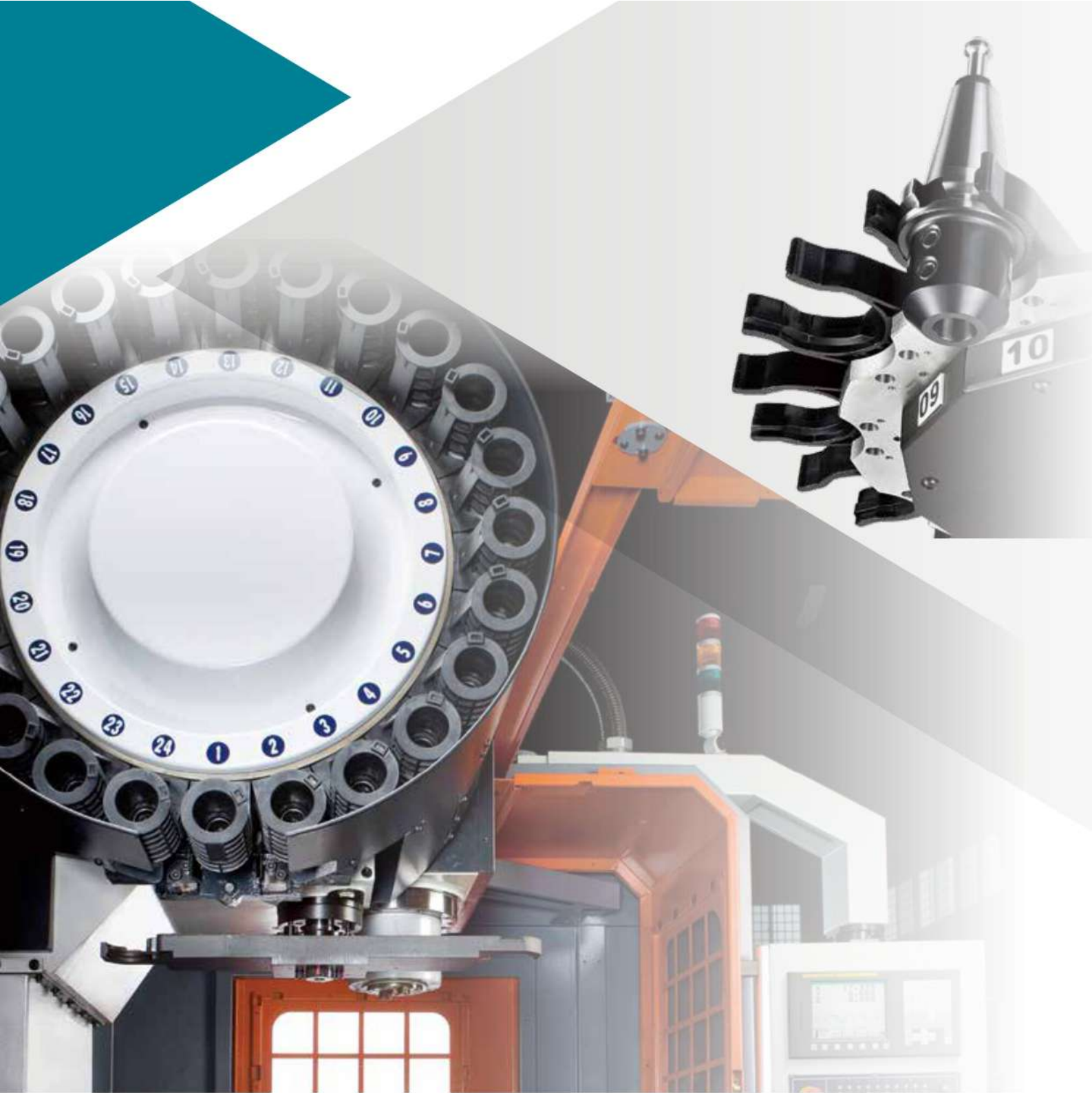
High quality of wiring panels complied with CE standard.



Electronics

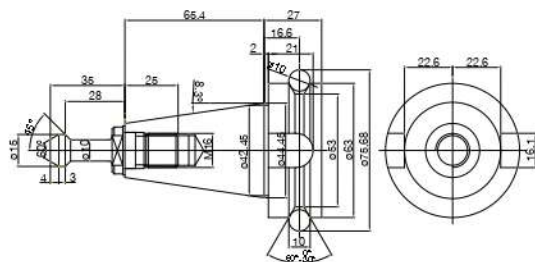


Energy resources

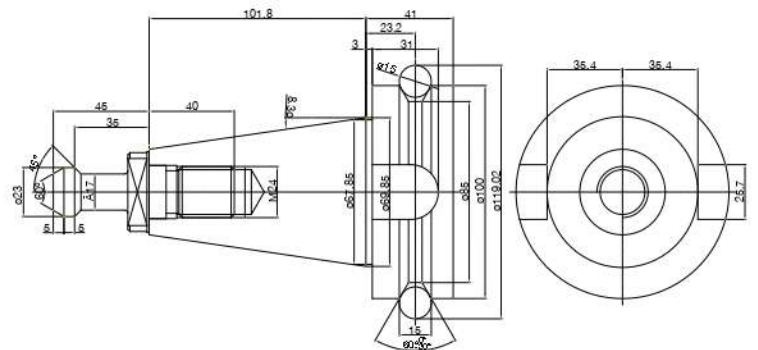


Spindle Tool Diagram

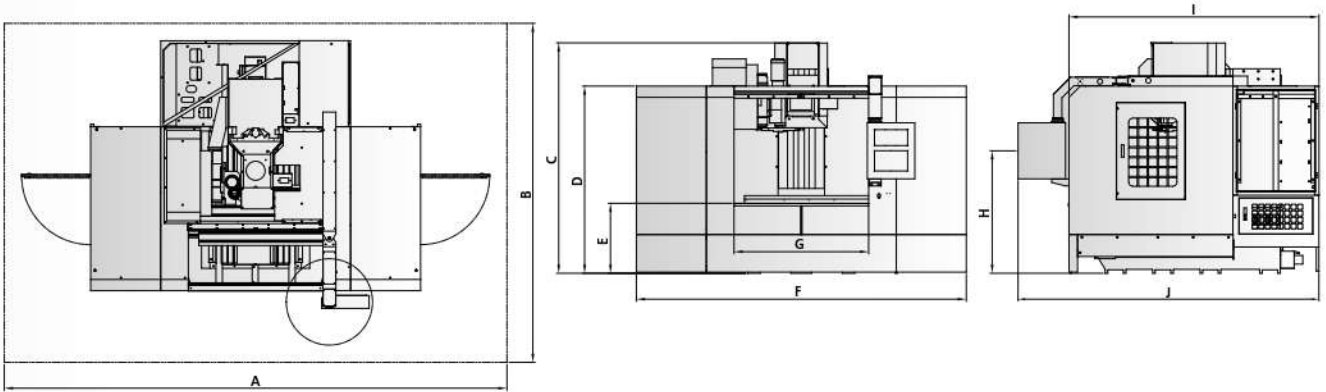
BT-40 Standard



BT-50 Standard



Model Dimensions



MODEL	A	B	C	D	E	F	G	H	I	J
VMC-A650	4258	4064	2519	2159	861	2200	1040	1481	2327	2540
VMC-A750	4258	4064	2519	2159	861	2200	1040	1481	2327	2540
VMC-A/E850	5118	3982	2658	2145	866	3060	1370	1500	2405	2851
VMC-A/E1000	5118	3982	2658	2145	866	3060	1370	1500	2405	2851
VMC-A/E1100	4960	4660	2695	2226	866	3100	1560	1475	2998	3627
VMC-E1300	5826	3928	2670	2169	811	3824	1560	1420	2898	3487
VMC-E1400	5826	3928	2670	2169	811	3824	1560	1420	2898	3487
VMC-E1801	7575	5155	3310	2761	960	5090	2400	1850	3378	4350
VMC-E1901	7575	5155	3310	2761	960	5090	2400	1850	3378	4350
VMC-E2101	7575	5155	3310	2761	960	5090	2400	1850	3378	4350



Specification

	UNIT	A650	A750	A / E 850	A / E 1000
Work Table					
Working table size (LxW)	mm	700 x 410	800 x 460	1000 x 560	1150 x 600
T-slots	mm	18 x 3 x 125	18 x 3 x 125	18 x 5 x 100	18 x 5 x 100
Max. table load	kgs	500	500	600	600
Travel					
X axis travel	mm	650	750	850	1000
Y axis travel	mm	410	460	560	600
Z axis travel	mm	510	540	560	600
Spindle nose to table surface	mm	140 - 650	120 - 660	120 - 680	120 - 720
Spindle					
Transmission		Belt - Drive			
Spindle taper		BT - 40	BT - 40	BT - 40	BT - 40
Spindle speed	rpm	10000	10000	8000	8000
Spindle motor	kw	5.5 / 7.5	5.5 / 7.5	7.5 / 11	7.5 / 11
Feed					
X-Y-Z motor (Fanuc)	kw	1.8 / 1.8 / 3	1.8 / 1.8 / 3	3 / 3 / 3	3 / 3 / 3
X-Y-Z motor (Mitsubishi)	kw	1.5 / 1.5 / 3	2.2 / 2.2 / 3	3 / 3 / 3	3 / 3 / 3
X-Y-Z rapid travel	M/min.	36 / 36 / 30	36 / 36 / 30	A :36 / 36 / 30 E :36 / 36 / 24	A :36 / 36 / 30 E :36 / 36 / 24
X-Y-Z cutting feed rate	M/min.	10	10	10	10
ATC System					
ATC type		Arm Type			
Magazine capacity	pcs	24	24	24	24
Max. tool diameter	ø(mm)	80	80	100	100
Max. tool length	mm	200	200	300	300
Max. tool weight	kgs	7	7	8	8
Rail Type					
A series - 3 axes linearways					
Dimension & Others					
Power consumption	KVA	15	15	15	15
Air pressure required	kg/cm ²	6 - 8	6 - 8	6 - 8	6 - 8
Floor occupation (LxWxH)	cm	220 x 255 x 255	220 x 255 x 255	310 x 290 x 270	310 x 290 x 270
Machine weights	kgs	4200	4300	6800	7000

All specifications & design are subject to change without prior notice.

Standard Accessories

- | | |
|--|-----------------------------------|
| 1 3-axes auto lubrication system | 8 Work lamp |
| 2 Rigid tapping | 9 Alarm indicator |
| 3 Cooling device | 10 Tool kits with foot pad screws |
| 4 Full enclosed guard | 11 Telescopic cover on 3-axes |
| 5 Spindle air blast | 12 Operation manual |
| 6 Standard RS-232 transmission interface | 13 Maintenance manual |
| 7 Heat exchanger | |

A / E 1100	E1300	E1400	E1801	E1901	E2101
1150 x 600	1500 x 710	1500 x 710	1970 x 1000	2050 x 1000	2250 x 1000
18 x 5 x 100	18 x 7 x 100	18 x 7 x 100	18 x 7 x 150	18 x 7 x 150	18 x 7 x 150
800	1000 - 1200	1000 - 1200	2800	2900	3000
1100	1300	1400	1800	1900	2100
600	650	700	900	900	1000
600	650	700	800	900	900
120 - 720	120 - 670	120 - 820	200 - 1000	200 - 1000	200 - 1000
Belt - Drive					
BT - 40	BT - 40	BT - 40	BT - 50	BT - 50	BT - 50
8000	8000	8000	6000	6000	6000
7.5 / 11	11 / 15	11 / 15	15 / 18.5	15 / 18.5	15 / 18.5
3 / 3 / 3	3 / 3 / 4	3 / 3 / 4	7 / 7 / 7	7 / 7 / 7	7 / 7 / 7
3 / 3 / 3	3.5 / 3.5 / 3.5	3.5 / 3.5 / 3.5	7 / 7 / 7	7 / 7 / 7	7 / 7 / 7
A :36 / 36 / 30 E :36 / 36 / 24	20 / 20 / 20	20 / 20 / 20	15 / 15 / 15	15 / 15 / 15	15 / 15 / 12
10	10	10	8	8	8
Arm Type					
24	24	24	24	24	24
100	100	100	125	125	125
300	300	300	300	300	300
8	10	10	15	15	15
E series - Z boxways & X-Y linearways / Y- 4guideways (for 1300/1400 and larger models)					
20	20	20	25	25	25
6 - 8	6 - 8	6 - 8	6 - 8	6 - 8	6 - 8
310 x 365 x 270	385 x 350 x 270	385 x 350 x 270	510 x 435 x 335	510 x 435 x 335	510 x 435 x 335
7200	8500	8900	18500	18500	20000

Optional Accessories

- | | |
|---|---|
| ① Fanuc / Mitsubishi controller | ⑧ Work-piece measurement |
| ② Chip conveyor | ⑨ Disc oil / coolant separator |
| ③ 4th & 5th axis rotary table | ⑩ Coolant through spindle (CTS) |
| ④ Spindle speed 10000 rpm / 12000 rpm (BT-40) | ⑪ Spindle splash surround (for arm type only) |
| ⑤ 3-axes linear scales | ⑫ Electric cabinet air conditioner |
| ⑥ Spindle cooling system | ⑬ Automatic voltage stabilizer |
| ⑦ Auto tool length measurement | ⑭ Transformer |

Persuing Excellence · Winning Respect



Taiwan Headquarter

TAIWAN WINNERSTECH MACHINERY CO., LTD.
37, Lane 282 North 6th, Sec. 4, Changping Rd.,
Daya Dist., Taichung City 42850, Taiwan.
TEL +886-4-2565-2092~3 • FAX +886-4-2565-2391
E-mail: info@winnerstech.com.tw
www.winnerstech.com.tw

Agent/Dealer/Distributor
